



[www.quendalemill.co.uk](http://www.quendalemill.co.uk)

Website:

[info@quendalemill.co.uk](mailto:info@quendalemill.co.uk)

You can also email us:

(meetings are all open to the public).  
and join us at the Mill  
evenings after 1930) or come along  
(when the Mill's open and Thursday

**Tel: 01950 460969**

We hope you enjoy it.

of Dunrossness'

This year we have put together a photo  
exhibition on the 'Birds and Wildflowers

all on a voluntary basis.

the following season's exhibits -

planning and preparing for  
the year and spends the winter months  
a quality visitor attraction for 6 months of  
operation of the Quendale Water Mill as

The history group manages the

**Community History Group**

**South Mainland**

QWMDr2019

Current exhibits in the video room  
include artefacts from the 'Oceanic'  
and Coin and Banknote collections  
which have been donated  
or loaned to the History Group  
by local people and visitors,  
for public display in the Mill.



by our custodian.

Queries will be answered gladly  
exhibits throughout the Mill.

Browse the photo displays and

history of the Mill.

machinery and relating some of the  
local people busy operating the  
Mill in full working order, showing  
Watch the professional DVD of the

**and Exhibitions**

**Photo Displays**

**Video Room,**

The name Quendale is believed to  
derive from Old Norse kvern dalr -  
'mill valley', so there were obviously  
mills here long before this Mill  
was built.

This is an overshot watermill,  
so called because the water is  
channelled to flow over the top of  
the wheel, the downward force and  
weight of the water forcing the wheel  
to rotate, thus driving the machinery  
in the Mill.

The Mill was built in 1867 by the  
Grierson family, Lairds of the  
Quendale Estate. Grinding  
commenced the following year and  
continued on a commercial basis  
until 1948. Oats and Bere were  
brought to be ground into meal from  
a large surrounding area (from as far  
afield as Fair Isle and Whiteness).

The transport first of all being pony  
and cart, followed in time by lorries,  
once roads had been improved.

**Mill History**

## Craft Shop

The Craft Shop is well stocked with an  
interesting variety of quality goods and  
a good selection of holiday reading  
material. Locally made products are  
sourced wherever possible - a few  
examples are given here:

Shetland Knitwear

Shetland Publications

Shetland Jewellery

Shetland Soap

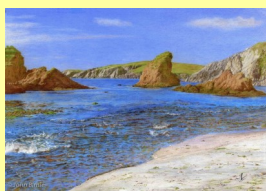
Cards and Souvenirs

Music CDs & DVDs

Leaflets on the 'Braer'  
and 'Oceanic' disasters

Owl & Puffin Coasters

Photos and Paintings  
by local artists



Need a break? **Hot** and **Cold** Drinks &  
Snacks always available.

No entry charge to Craft Shop

## Visitor Information Point in association with Promote Shetland

We hold a large selection of free  
leaflets and information on all areas  
of Shetland and can help you plan  
your itinerary, if you wish.



*Free WiFi*

This little Goldcrest is deciding  
on its next stop during its visit  
to Shetland - this area is a  
favourite stopover during the  
migratory seasons.

We can also advise you on other  
places of interest to visit  
while you are in the area:

from angling to bird watching to  
discovering ancient monuments;  
beautiful beaches, wild flowers,  
fantastic scenery - we've got it all!  
There are also several interesting  
geological features to be found  
locally and many more throughout  
Shetland



## Quendale Water Mill History and Heritage



### Craft Shop and Visitor Centre

Situated in a sheltered valley in  
Quendale, Dunrossness,  
this is the last remaining  
industrial building of its era  
in Shetland and open to visitors  
for 6 months of the year.

Open: 15th April to 13th October  
Daily: 1000 to 1700

**Hot** or **Cold** Drinks and Snacks

*Quality Goods at Competitive Prices*

Comprehensive Information on  
Shetland's Attractions.

Admission to Mill & Exhibitions:

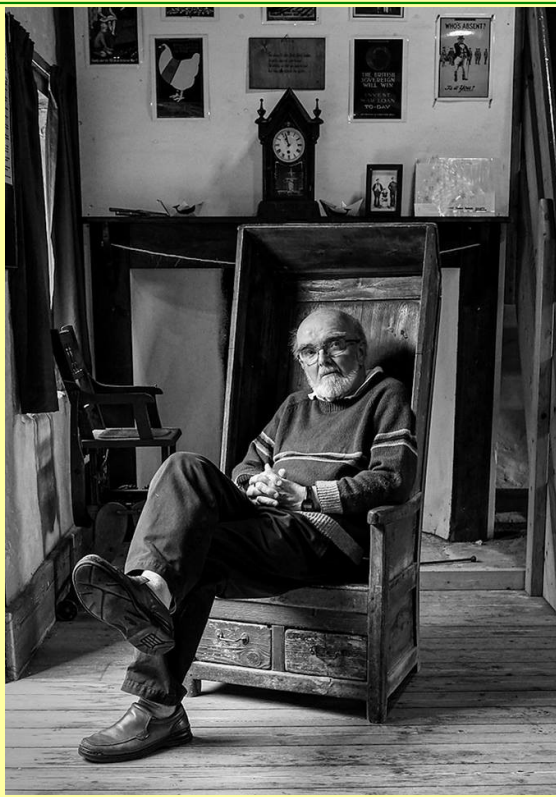
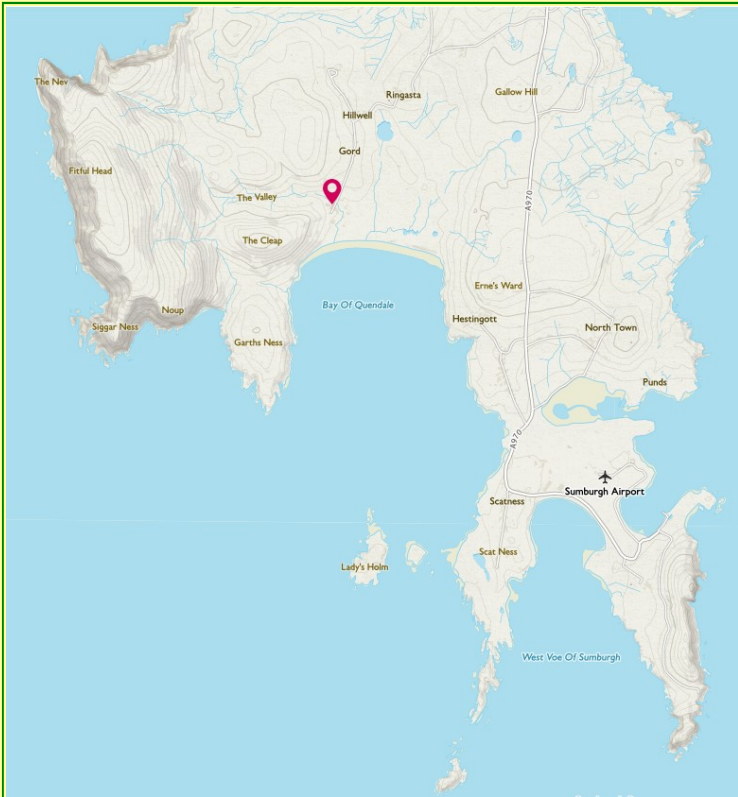
Adult £4.00

Senior Citizen/Conc. £3.00

Children (12-16yrs) £1.00

Under 12's Free





Above: Display of Barrel Making Tools

Left: Custodian George Jacobson relaxing in a traditional Shetland chair. Photo: Bob Krist



The Mill is situated approximately 2½ miles (4km) off the main Sumburgh to Lerwick A970 road and is well signposted.

It is in the middle of a working farm so all visitors should show due care and attention when travelling through the area.

Thank you for your consideration.

Displayed throughout the Mill and Mill courtyard is a selection of machinery, tools and artefacts used by local people (and sometimes also made by them) to ease the burden of the crofter's work. From ancient hand tools to horse-drawn ploughs, reapers and threshing machines. These displays show the tools and equipment used by many crofters - who, besides working on the land and being fishermen, were also often cobblers and craftsmen.



Left: Visitors watch the video of the Mill in operation

### Genealogy

Anyone interested in their family history and wishing to trace relatives who came from this area of Shetland are asked to contact us in advance of their visit (whenever possible).

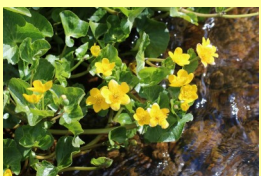
Email: [info@quendalemill.co.uk](mailto:info@quendalemill.co.uk)

### Group Visits

Visits by groups are welcomed. We can accommodate coach tours, however we would request you telephone well in advance to: **01950 460969 or 01950 460550** so that we can arrange for an additional Custodian to ensure you are properly looked after.

### Flowers

A walk along the Mill burn can be very relaxing with several varieties of wild flowers in the vicinity.



### Bird Watching

This area is well-known for attracting many different birds (including rarities) during the migratory seasons.



### Something for the Children



Tamara da Coo and Scavenger hunts - something to keep them occupied on an inclement day and suitable for children of all ages!

There's plenty of room and lots of time for them to explore and find the answers to the quiz and we provide answer sheets for those who maybe don't have enough time to finish it, so they don't have to go away disappointed.

*Please note: Children must be accompanied at all times.*

**School visits welcomed** - please advise us in advance of your intended visit.

Please ask if you have any questions - if our Custodian does not have the answer we will find out and get back to you with a response.

### Visitors Comments

"Excellent display!" - Cooma Historical Society, NSW, Australia.

"Très beau moulin" - Normandie, France.

"Very informative. Thank you!" - Worcestershire, England.

"Thank you for all the very hard work to restore the mill. Fascinating displays!" - Massachusetts, USA.

"Very helpful custodian." - Taihape, New Zealand.

"Interesting history. Thanks!" - Ørsta, Norway.

"A very interesting museum & helpful & informative staff." - Reading, UK.

"This place is a miracle: people need to see how life was." - Trieste, Italy.

"Must return (great)." - Monifieth, Dundee, Scotland.

"😊"

Queensland, Australia.